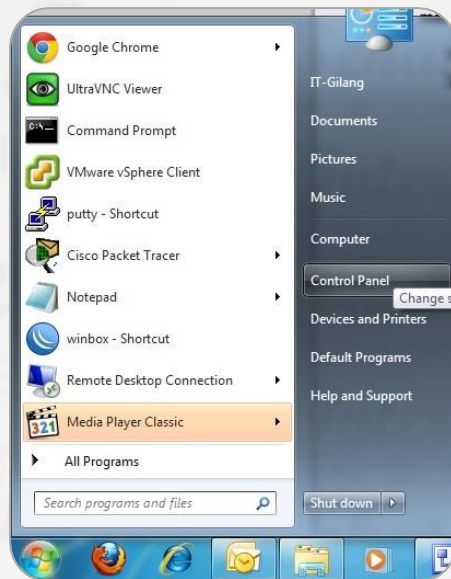
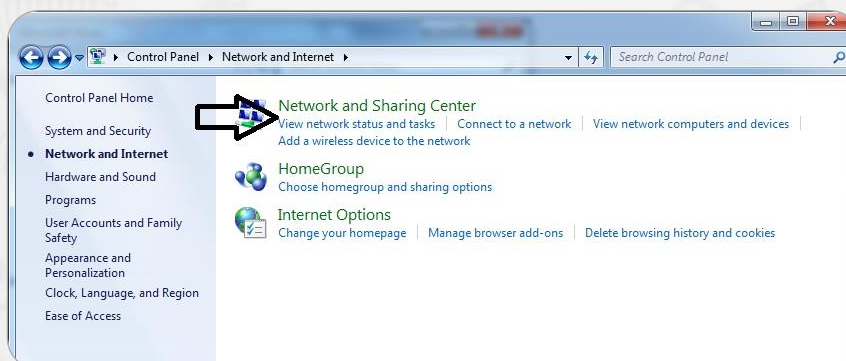


msWindows

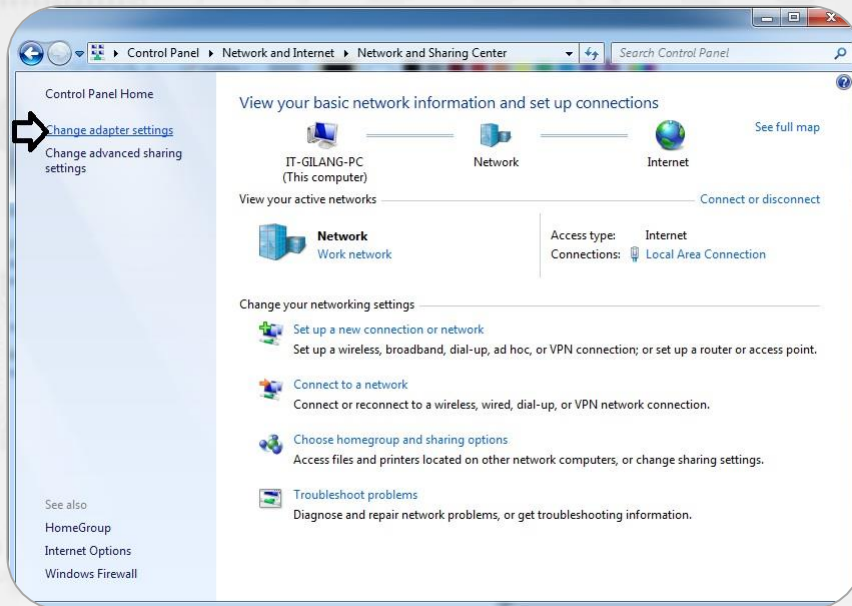
1. Klik Start -> Control Panel



2. Klik Network and Sharing Center



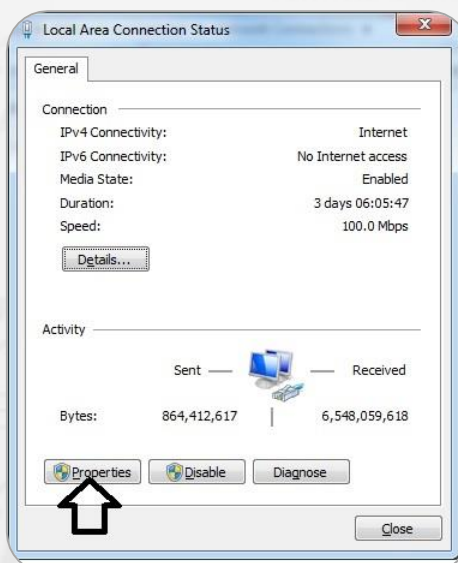
3. Klik Change Adapter Setting



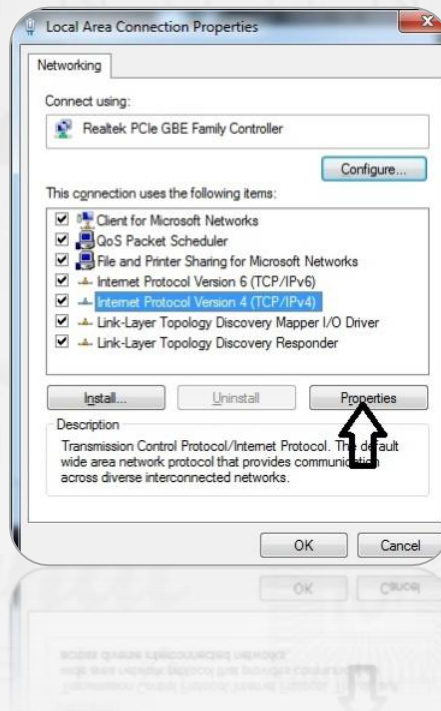
4. Klik 2-kali Local Area Connection



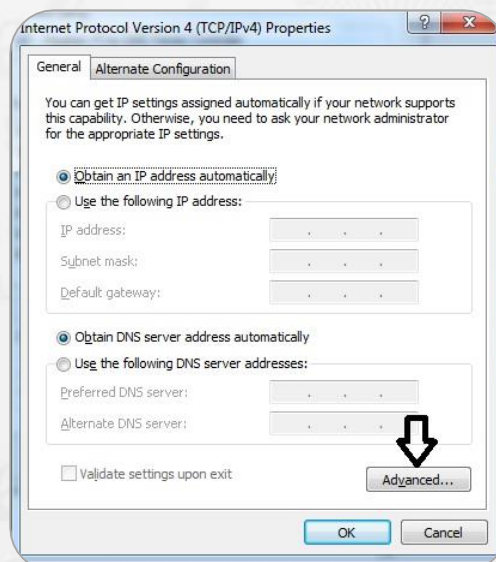
5. Klik Properties



6. Pilih Internet Protocol Version 4(TCP/IPv4) -> klik Properties



7. Klik Advanced



8. Klik DNS -> Add



9. Masukkan DNS ISI Moratelindo

